

Control Valve Kits

3A1932A
EN

For replacing parts on control valves used on Integrated Reactor® Proportioning Systems.



Important Safety Instructions

Read all warnings and instructions in the Integrated Reactor Proportioning System manual. **Save these instructions.**

125774 — Valve Repair Kit

125787 — Valve Coil Replacement Kit



Repair

During disassembly, inspect all components for damage.

1. See Integrated Reactor Proportioning System manual for control valve removal instructions.
2. Remove nut and washer from coil.
3. Remove the coil from the armature tube. To install valve coil kit 125787, go to step 10.
4. Unscrew the armature tube.
5. Remove plunger.
6. Remove four screws, four washers, cover, two gaskets, and diaphragm.
7. Insert the new diaphragm (4) and gaskets (3) in valve body. Ensure diaphragm orientation is as shown.
8. Use four screws and washers and assemble cover on body. Torque to 70 in-lbs (8 N•m).
9. Insert new plunger (2) in armature tube and screw in valve assembly. Torque to 266 in-lbs (30 N•m).
10. Insert new coil (1) on armature tube with washer and nut. Torque to 15 in-lbs (1.7 N•m). Swivel coil (1) to match orientation of valve being repaired.

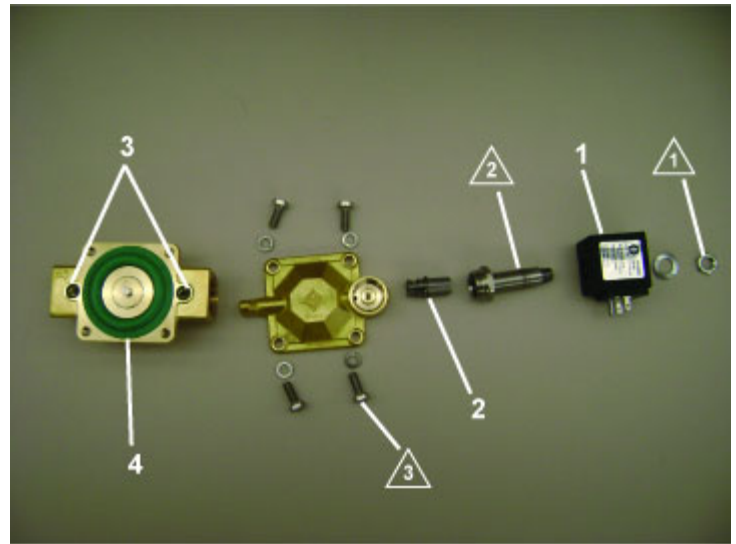
Parts




125774 Valve Repair Kit

Ref.	Description	Qty.
2	PLUNGER, complete	1
3	GASKET	2
4	DIAPHRAGM	1

125787 Valve Coil Replacement Kit

Ref.	Description	Qty.
1	COIL, valve	1



-  Torque to 15 in-lbs (1.7 N•m)
-  Torque to 266 in-lbs (30 N•m)
-  Torque to 70 in-lbs (8 N•m)

Graco Information

For the latest information about Graco products, visit www.graco.com.

To place an order, contact your Graco Distributor or call to identify the nearest distributor.

Phone: 612-623-6921 **or Toll Free:** 1-800-328-0211 **Fax:** 612-378-3505

All written and visual data contained in this document reflects the latest product information available at the time of publication.

Graco reserves the right to make changes at any time without notice.

Original Instructions. This manual contains English. MM 3A1932.

Graco Headquarters: Minneapolis

International Offices: Belgium, China, Japan, Korea

GRACO INC. AND SUBSIDIARIES • P.O. BOX 1441 • MINNEAPOLIS MN 55440-1441 • USA

Copyright 2011, Graco Inc. All Graco manufacturing locations are registered to ISO 9001.

www.graco.com