

Compressor Kit for ToughTek™ F340e Fireproofing Pump

3A3998C

EN

*For the installation of a compressor to ToughTek F340e fireproofing systems.
For professional use only.*

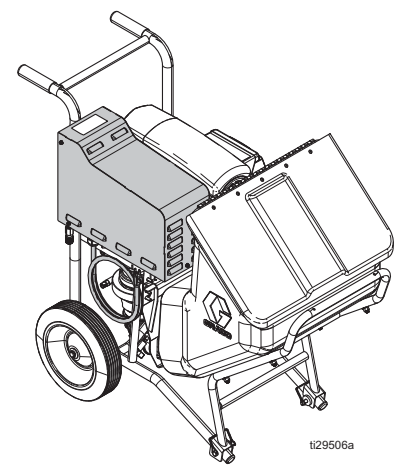
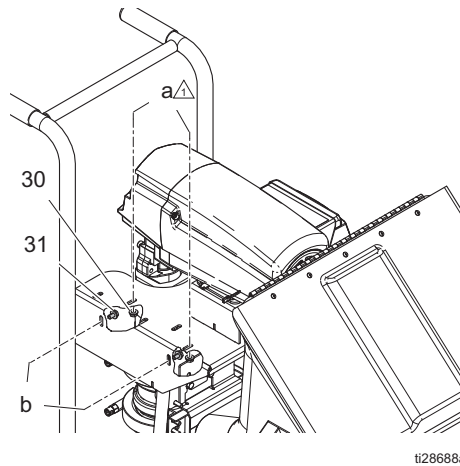
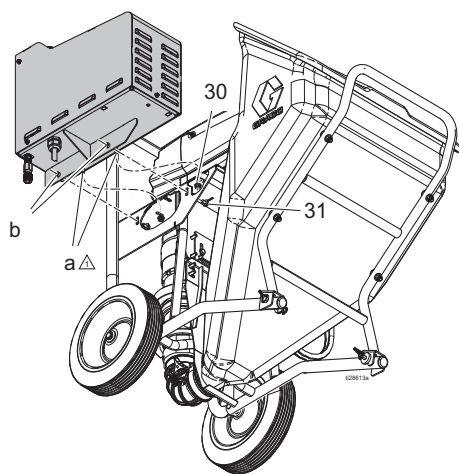
Kit 25A930 - 120 VAC Compressor Kit

Kit 25A931 - 240 VAC Compressor Kit



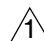
Important Safety Instructions

Read all warnings and instructions in the F340e
Operation manual. Save these instructions.



Installation:

1. Remove and discard the toolbox and toolbox mounting bracket.
2. Install two screws (31) into holes (b).
3. Install two nuts (30) onto studs (a).

 Tighten all fasteners one full turn past hand tight.

Models

Models	
25A930 100-120 VAC	25A931 230-240 VAC
Max Pressure: 55 psi (3.7 bar, 0.37 MPa)	Max Pressure: 55 psi (3.7 bar, 0.37 MPa)
Max Flow: 5 cfm	Max Flow: 5 cfm
Current Draw: 15 Amps	Current Draw: 8.5 Amps

Compressor and Motor Repair

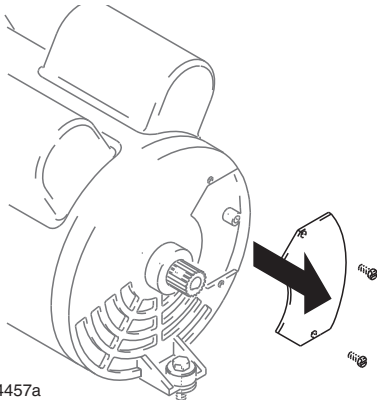
For 120 V sprayer, use Compressor and Motor Replacement Kit 287315.

For 230 V sprayer, use Compressor and Motor Replacement Kit 287344.

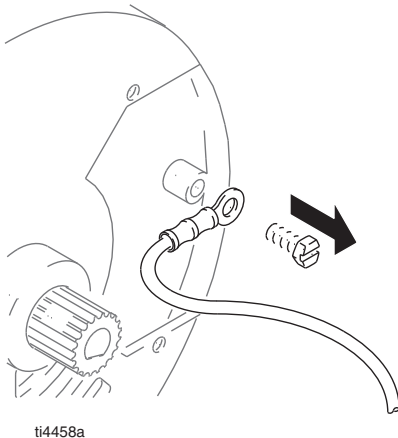
Kits include motor/compressor and mounting hardware.

Disassembly

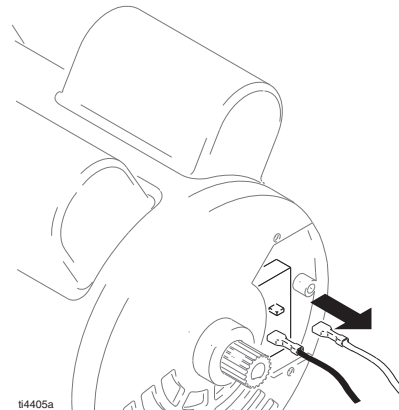
1. Remove two screws and access the cover on the left side of the motor.



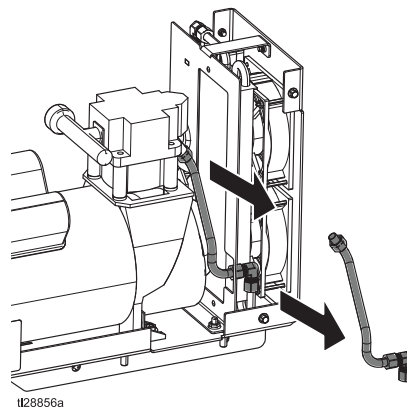
2. Remove the ground nut and disconnect the green ground wire.



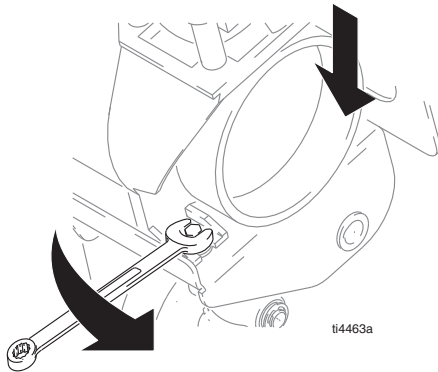
3. Disconnect the black and white wires to the motor.



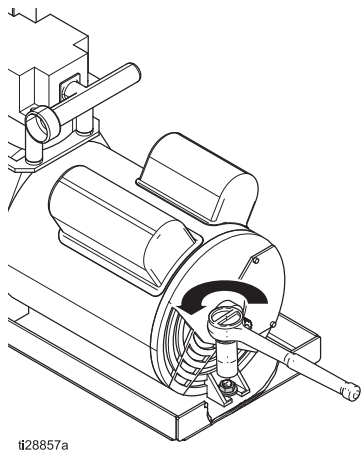
4. Disconnect the air line from the compressor to the cooler and remove the air line.



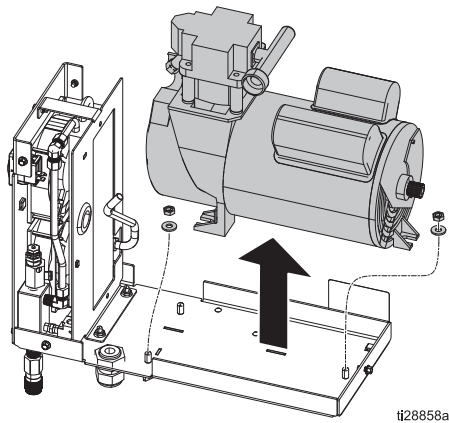
5. Remove two fasteners and washers.



6. Remove fasteners and washers on the other side of the motor.



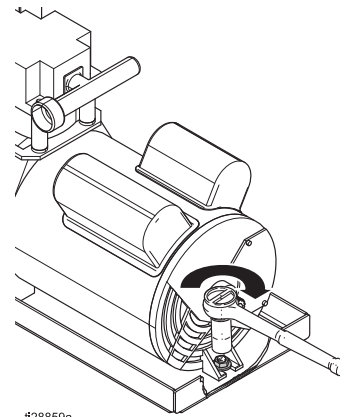
7. Lift out the motor and remove it from the assembly.



8. Thoroughly clean inside housing to remove dust and debris.

Reassembly

1. Install the motor into the assembly.
2. Install the washers and fasteners on both sides of the motor.



3. Install the air line and connect the air line from the compressor to the cooler.
4. Connect the black and white wires to the motor.
5. Install the green ground wire and tighten the ground nut.
6. Install the cover on the left side of the motor and tighten two screws.

Compressor Rebuild Kit

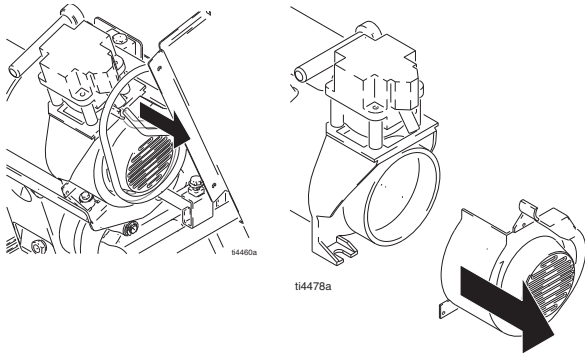
To replace the piston, seals and sleeve.

For 120 V sprayer, use Compressor Rebuild Kit 287330.

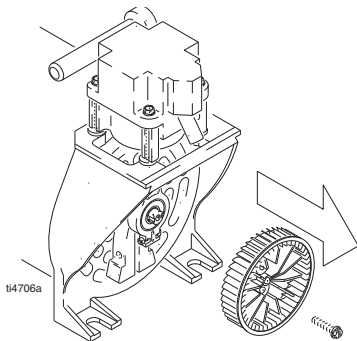
For 230 V sprayer, use Compressor Rebuild Kit 287331.

Disassembly

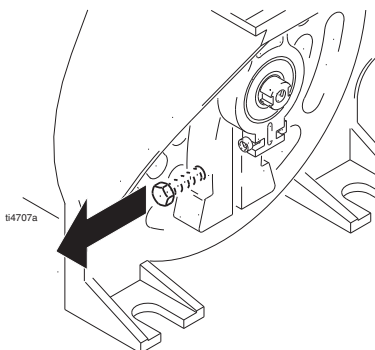
1. Remove the three screws in the side of the motor cover. Remove the cover.



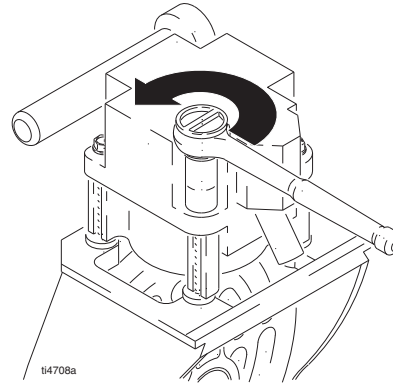
2. Remove the fan bolt from the center of the fan and remove the fan from the housing.



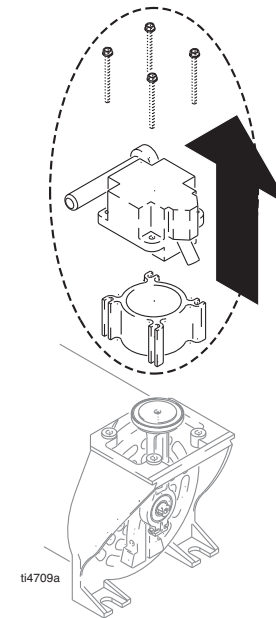
3. Remove the 3/8 in. bolt holding the piston to the motor shaft.



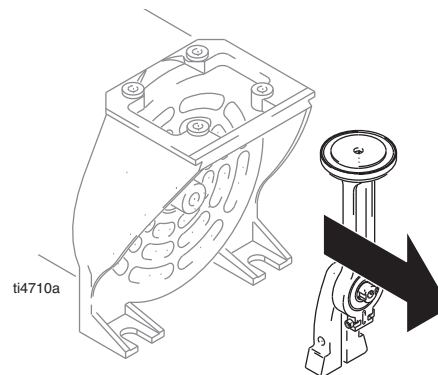
4. Loosen the four bolts on top of the motor housing.



5. Remove the bolts and housing from the motor.

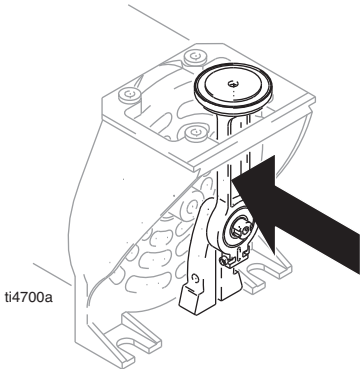


6. Remove the piston rod from the motor.

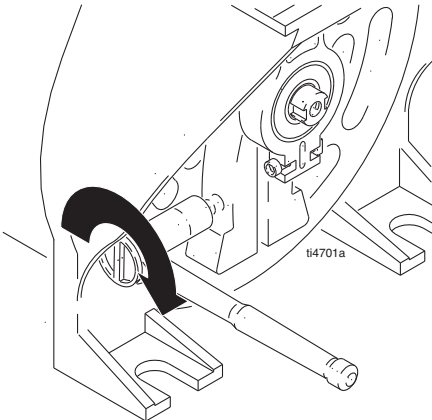


Reassembly

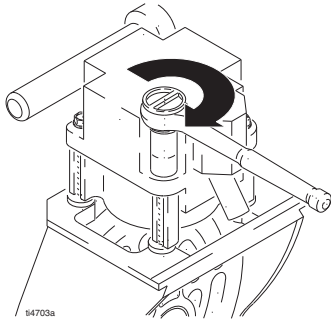
1. Insert the new piston rod in the motor housing.



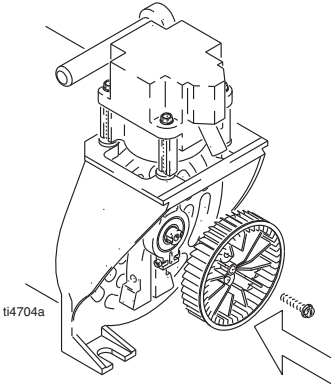
2. Replace and tighten the piston bolt.



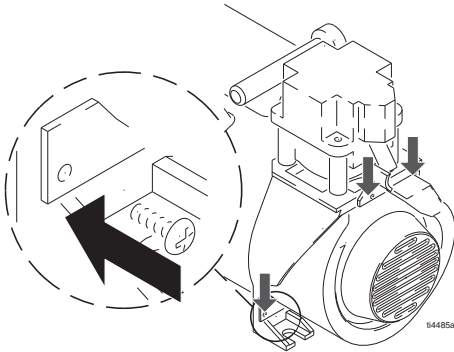
3. Replace the top motor housing and four bolts. Tighten the four bolts.



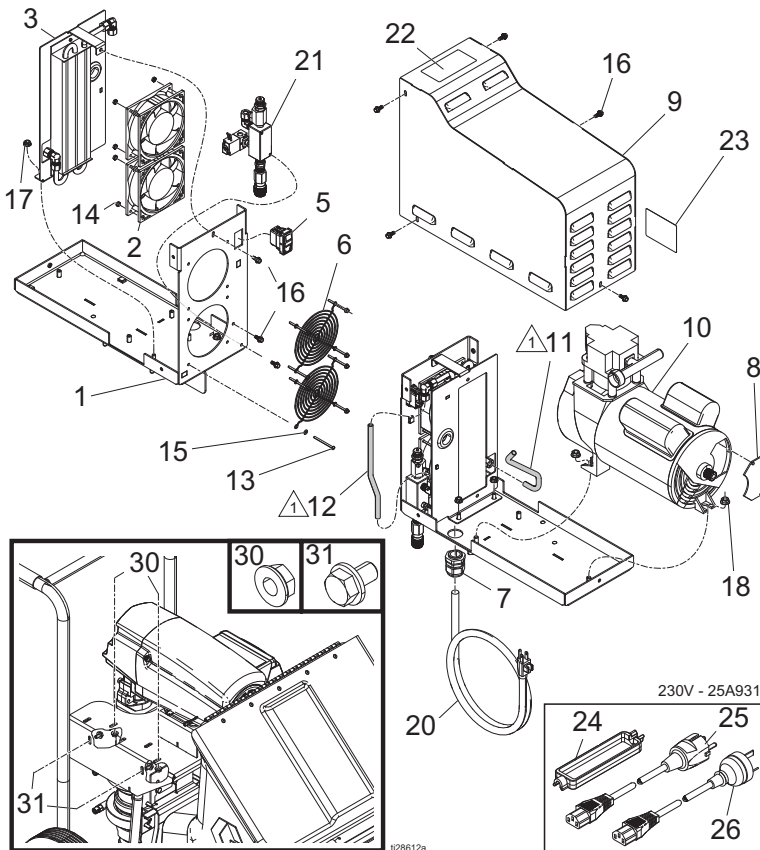
4. Replace the motor fan and center the fan bolt. Tighten the fan bolt.



5. Replace the motor cover and screws.



Parts



Parts List

Ref. Part	Description	Qty.	Ref. Part	Description	Qty.
1	----- TRAY, weldment, compressor	1	17	115942 NUT, hex, flange head	2
2	24K895 FAN, cooling, 120 V, E10 (Kit 25A930)	2	18	110996 NUT, hex, flange head	3
	24K896 FAN, cooling, 240 V (Kit 25A931)	2	19	17G371 HARNESS, F340E, compressor	1
3	25E572 COOLER, assembled, F340e	1	20	17G372 CORD, 120V, compressor (Kit 25A930)	1
4	125871 TIE, cable, 7.50 in.	7		17G373 CORD, 240V, compressor (Kit 25A931)	1
5	17F718 SWITCH, rocker, 2-position	1	21	17L426 MANIFOLD, F340e, 120V (Kit 25A930)	1
6	115836 GUARD, finger	2		17L427 MANIFOLD, F340e, 230V (Kit 25A931)	1
7	116171 BUSHING, strain relief	1	22	15J075 LABEL, safety, hotsurf & energized	1
8	119381 COVER, terminal	1	24	195551 RETAINER, plug, adapter (Kit 25A931)	1
9	----- COVER, weldment, compressor	1	25	242001 CORD SET, adapter, Europe (Kit 25A931)	1
10	25E570 COMPRESSOR, air (6 cfm) 120 V (Kit 25A930)	1	26	242001 CORD SET, adapter, Europe (Kit 25A931)	1
	25E571 COMPRESSOR, air (8 cfm) 240 V (Kit 25A931)	1	30	110996 NUT	4
11	17K734 TUBE, compressor	1	31	111801 SCREW	2
12	17K733 TUBE, air, cooler	1	32	113500 ADHESIVE	1
13	117723 SCREW, mach, x rec, panhd	8			
14	127278 NUT, keps, hex	8			
15	151395 WASHER, flat	8			
16	----- SCREW, flge, serrated, 10-24 x 0.5	8			

Use compressor rebuild kit 287330 (120 V), or 287331 (230 V) to replace the piston, seals, and sleeve.

All written and visual data contained in this document reflects the latest product information available at the time of publication. Graco reserves the right to make changes at any time without notice. Original instructions. This manual contains English. MM 3A3998

Graco Headquarters: Minneapolis
International Offices: Belgium, China, Japan, Korea

GRACO INC. AND SUBSIDIARIES • P.O. BOX 1441 • MINNEAPOLIS MN 55440-1441 • USA
 Copyright 2016, Graco Inc. All Graco manufacturing locations are registered to ISO 9001.

www.graco.com
 Revision C, November 2018